

## BAPKTR Klamp-Tite

Dome head · Aluminium body · Aluminium stem · Folding  
4.8 mm (3/16") - 6.4 mm (1/4")

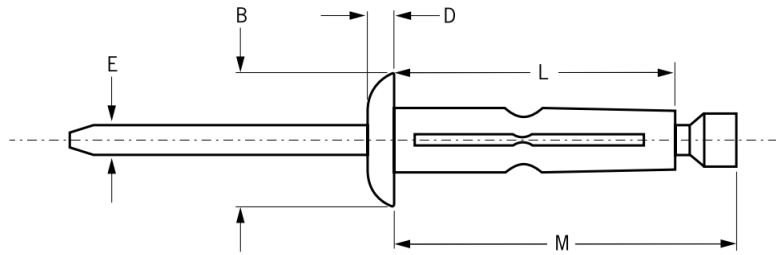
### Features

- Very large blind side bearing area against the rear sheet
- Split tail formation spreads the tail bearing load/clamp load on the rear sheet
- Ideal for use in thin sheet or low strength materials offering high resistance to pull-out loads
- Multi-grip capability accommodates wide variations in material thickness
- Stem is mechanically locked into body providing very strong, vibration resistant joints
- Visible lock for quick and easy inspection
- Optional underhead washer provides a weather-proof seal



### Material

- Body: Aluminium alloy 5056, wax lubricated
- Stem: Aluminium alloy 7075, wax lubricated



Part No.	Size ø	Grip Range		Hole Size		M max.	øB ± 0.4	D ref.	L max.	øE ref.	Shear (typical) kN	Tension (typical) kN
		nom.	min.	max.	min.							
BAPKTR-06-04	4.8 (3/16")		1.27	6.35	5.18	26.5	11.3	2.2	22.7	2.6	3.11	2.00
BAPKTR-06-06			4.75	9.53		28.7			25.1			
BAPKTR-06-09			9.53	14.27		31.8			28.5			
BAPKTR-06-12			14.27	19.05		36.6			33.1			
BAPKTR-08-04	6.4 (1/4")		1.52	6.35	6.40	33.1	14.2	2.9	23.5	3.5	5.56	3.11
BAPKTR-08-06			4.75	9.53		36.1			26.7			

